



ACCREDITED



Your Electrical Solutions Provider

Seattle • Phoenix • Salt Lake City

WASHINGTON

14311 29th Street East ■ Sumner, WA 98390
Phone 253.891.1995 Fax 253.891.1511

ARIZONA

5680 South 32nd Street ■ Phoenix, AZ 85040
Phone 602.426.1667 Fax 253.891.1511

UTAH

1414 East Emerson Avenue ■ Salt Lake City, UT 84105
Phone 801.554.3544 Fax 253.891.1511

24-Hour Emergency Services
888.395.2021

www.westernelectricalservices.com



Your Electrical Solutions Provider



ACCREDITED

Electrical Testing & Engineering Services

Electrical Power Equipment, Supply, Service & Repair

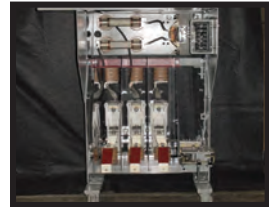
Obsolete Parts Manufacturing & Remanufacturing

24-Hour Emergency Services
888.395.2021

www.westernelectricalservices.com



APPARATUS & SHOP SERVICES



LIFE EXTENSION

LET US DESIGN A PROGRAM TO EXTEND THE LIFE OF YOUR SWITCHGEAR

- Vacuum retrofit
- Vacuum retrofit
- Solid state conversion
- Vacuum motor control upgrades



CIRCUIT BREAKERS

LOW & MEDIUM VOLTAGE

- General Electric
- Cutler Hammer
- Allis Chalmers
- Federal Pacific



MOLDED CASE CIRCUIT BREAKERS

- All major manufacturers in stock
- 15 amps to 4000 amps
- Hardware kits and accessories
- Insulated case breakers



UTILITY SERVICES

LOAD TAP CHANGER KITS (LTC) & REMANUFACTURING

- Westinghouse - UTT/UTTA/UTTB, UTS, UTS-A, URS
- McGraw Edison - 550BLS, 550, 550B, 550C
- Ferranti Packard - 25RT32, 25/34/69RT32
- GE - LRT200, LRT68, LRT72, LRT38/48
- FPE - TC523, TC525, TC534, TC546
- Siemens TLH-20/21, TLS, TLF, TLG

MEDIUM VOLTAGE

- Oil and Air Circuit Breakers
- Oil and Air Switches
- Motor Starters

▶ Custom Bus and Flexible Connectors

▶ Fiberboard and Insulating Products - Tap Boards - Insulation Links - Etc...



TRANSFORMERS

500KVA to 30MVA

- Dry type or oil filled transformers
- Cast resin
- Load break switch & fuse



SWITCHGEAR

480V - 38KV NEW AND SURPLUS

- Match existing lineup
- Reconditioned
- Complete unit substations
- Indoor and outdoor available



RENEWAL PARTS

SWITCHGEAR & CIRCUIT BREAKER PARTS

- All low & medium voltage renewal parts, 1945-today
- Obsolete vacuum interrupter
- Breaker coil and charging motor rewinding
- Fuses & live parts
- Transformers - Control, Metering



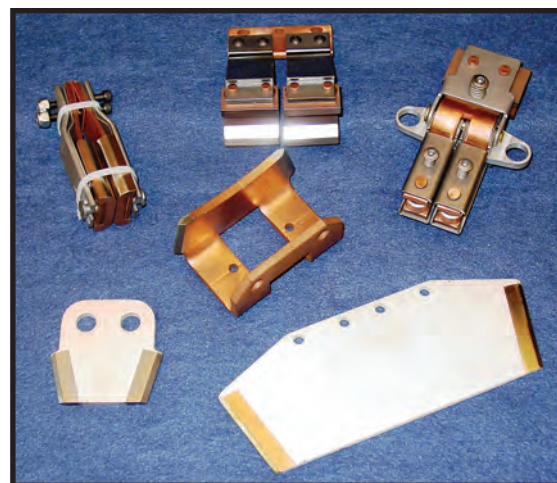
LOW & MEDIUM VOLTAGE MOTOR CONTROL

AIR & VACUUM MOTOR CONTROL

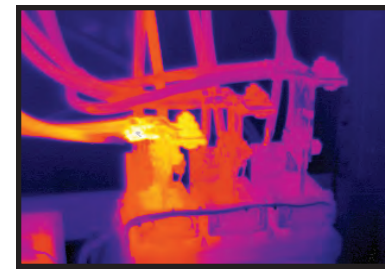
- Reconditioned starters and contactors
- Motor control components
- Upgraded buckets
- Panel mount switches

MANUFACTURING SERVICES

You can save thousands of dollars by remanufacturing, rather than replacing your contacts and parts.

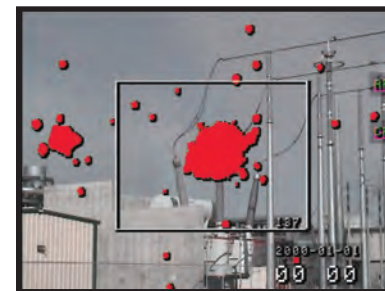


FIELD SERVICES



MAINTENANCE SERVICES

- Switchgear
- Transformers
- Protective Relays
- Circuit Breakers
- Automatic Transfer Switches
- Infrared Thermography
- Corona Surveys
- Partial Discharge Testing
- Ground Fault System Testing



ENGINEERING SERVICES

- Energy Efficiency Consulting
- Arc Flash Hazard Analysis
- 30-day Load Monitoring
- Short Circuit Analysis
- Load Flow Studies
- Protective Device Coordination
- Forensic / Fault Analysis
- Harmonics / Power Quality Assessments



COMMISSIONING & TESTING SERVICES

- Generation
- Transmission
- Distribution
- Data Centers
- Military Facilities
- Health Care Facilities
- Industrial Process Plants
- Commercial Properties
- Government Projects



Western Electrical Services is dedicated to providing the highest quality products, direct replacement parts and solutions for all types of circuit breakers or switchgear made in the United States since 1945. It is our commitment to provide the best service for all of your electrical testing, engineering and maintenance needs.

